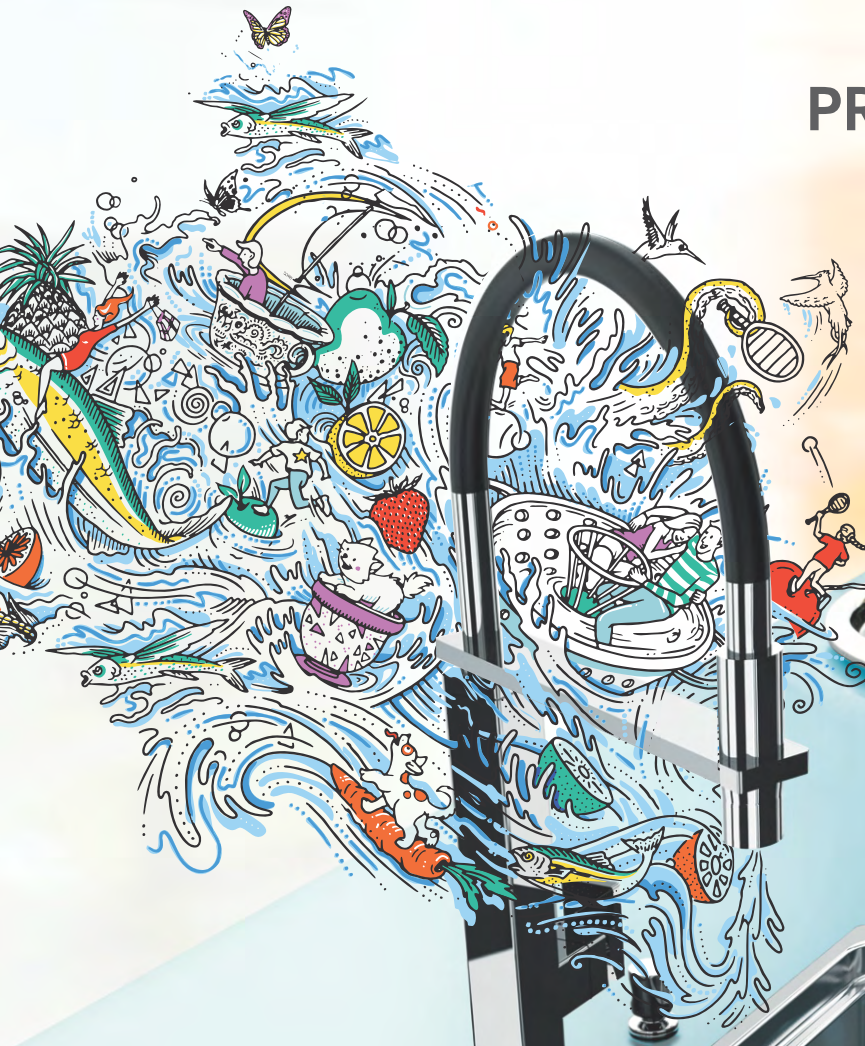


PRODUCT CATALOG 2018



MAKE IT WONDERFUL

FRANKE

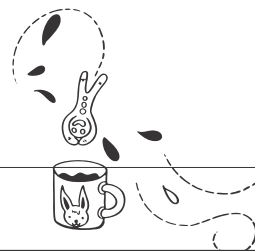
It's easy to be ordinary; to have an ordinary home, filled with things you neither love nor hate. But you should never settle for ordinary and that's why we want to make everything we make wonderful. Wonderful turns a house into a home and turns work into play. Every Franke product aims to be wonderful in every way; from the first glimpse of carefully considered design, to manufacturing standards that ensures you can feel the quality and craftsmanship of every piece.

This catalogue captures the spirit of wonderful in order to captivate and inspire you. A comprehensive range of sinks, taps, hobs, decorative hoods, kitchen appliance and accessories can help turn an everyday kitchen extraordinary and turn a daily chore into a guilty pleasure.

Let everyone else be ordinary. Let's make it wonderful.



Introduction



Franke Headquarters in Aarburg, Switzerland

Since 1911, Franke has been known for its dedication to research, development, manufacture and service. Today, it is one of the world's leading suppliers of kitchen sinks, taps, cooking hobs and extractor hoods.

GLOBAL FOOTPRINT



Aarburg, April 3, 2017, The Franke Group¹ achieved a pleasing increase in sales and significantly improved profitability in 2016, despite a challenging global economy. The sales growth was driven mainly by strong organic growth in the double-digit percentage range. The higher profitability is based on sales rises in practically all of the divisions and on group-wide operating efficiency improvements. Thanks to a solid strategic foundation and additional investments in innovation and employees, the Group was able to gain additional market shares. Furthermore, by reacting more quickly to business opportunities it could strengthen its market position further despite a tough, competitive environment. Franke belongs to the Artemis Group and is a world leading provider of solutions and equipment for residential kitchens and bathrooms, public/private washrooms, the professional foodservice sector, and coffee preparation. The Franke Group operates worldwide and employs around 9,000 people in 40 countries, generating sales of over CHF 2.0 billion.

Franke Artemis Group Core Business

GLOBAL POSITION

FRANKE KITCHEN SYSTEMS		No.1
FRANKE FOOD SERVICE SYSTEMS		No.1
FRANKE COFFEE SYSTEMS		No.2
FRANKE WATER SYSTEMS		No.3
FRANKE BEVERAGE SYSTEMS		No.1



ADVANTAGE FRANKE - High Grade Materials

TECTONITE®

Made in The Netherlands.

TECTONITE® is the latest innovation by Franke – made of TECTONITE®, which is a hi-tech, light but strong synthetic material that gives you amazing advantages:

- It is extreme temperature resistant (230-300 degrees)
- It is scratch resistant and has a super smooth and easy to clean texture
- It is resistant to chemicals used in the kitchen (vinegar, tomato sauce, etc.)
- It has a UV resistant coating (its colour will not change)
- It is a 100% recyclable material
- It is available in three high tech colours: carbon black, arctic white and coffee
- It has a five year warranty



TECTONITE® Technology



Beautiful and Strong

A great looking and smooth surface, the TECTONITE® material prevents scuffing or scratching. It is also easy to clean and doesn't lose colour.



3rd Generation Coating

A new coating called PiMC (Power in Mold Coating) gives a protective layer providing strength to the material and protecting its colour.



Exclusive Texture

It is finished with an exclusive texture that coats the sink and repels water and dirt to keep the surface looking as good as new.

AUSTENITIC STAINLESS STEELS (SS 304 - AUSTENITIC GRADE)

All Franke Stainless steel sinks are manufactured using only SS 304 Austenitic grade. Austenitic stainless steel are chromium & nickel containing stainless steel with very low carbon content. Austenitic 304 stainless steels formed through the generous use of austenitizing elements such as nickel, manganese and nitrogen. Chromium content is range of 18% and nickel content in range of 8%. They are non-magnetic but can become slightly magnetic when cold worked. Cold working also enhances their strength. Austenitic stainless steel have mechanical properties over a wide range of temperatures. In addition, these steel are easy to clean, which enhances their use in applications in hygienic and sterile environments.



18/10: 18% Chromium and 10% Nickel

This material is used in Neptune



18/8: 18% Chromium and 8% Nickel

This material is used in 610/611, 620, 621, 651 and Adrian Series



SUPERIOR FINISHES & PERFORMANCES



Microdecor Finish

The distinctive pattern of Microdecor steel is so light as to be almost invisible, recalling the effect of aluminum and giving the steel a unique, inimitable appearance. Any scratches only damage the tiny convex areas of the surface, while the imperceptible concave zones prevent the formation of visible marks.



European Satin Finish

Franke uses a unique process of brush polishing on CNC controlled latest technology machine along with special "Franke" ATL-F22 paste that gives product surface a smooth European Satin finish with good aesthetic look. This makes it best suitable for all kitchen applications since it is prone to scratching during daily usages.



Warranty



25 Year Warranty

All Franke Stainless Steel Sinks are guaranteed for 25 Year against faulty workmanship and material.



5 Year Warranty

All Franke Color Sinks are guaranteed for 5 Year against faulty workmanship and material.



1 Year Warranty

All Franke Taps, Bio Waste Disposer & Accessories are guaranteed for 1 Year against faulty workmanship and material.



TECHNOLOGY IN STAINLESS STEEL SINKS

A world leader in the production of sinks, Franke offers a unique range of products comprising models at the very pinnacle of functionality and design, complete with various accessories that epitomize practicality and efficiency.

Exclusive treatments: To further improve the quality of the steel, enhance the sheen and increase its resistance to wear, Franke carries out exclusive brushing and polishing treatments. The treatment, applied to hobs and sinks alike, also enhances the visual aspect of each solution.



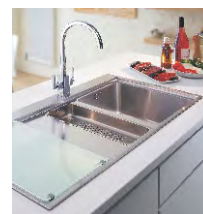
Years of research and experimentation have allowed Franke to guarantee the use of premium quality raw materials and the creation of excellent finished products in terms of: form and function; ease of use and total safety; water and energy savings with environmental protection in mind.

Only The Best Steel:

Franke luxury collection offers AISI 304 18/10 steel for the manufacture of its sinks. This stainless steel is highly resistant to rust and to the aggressive action of acids and chemical products.

Differentiated Solutions:

Franke offers built-in, under-top and top-flush solutions to satisfy all sink integration requirements while enhancing visual appeal and practicality.



TECHNOLOGY IN STAINLESS STEEL SINKS

Innovative Steel: Franke has always been committed to researching innovative material combining beauty, quality and performance.

Satin Finish Steel: Franke enhances its durable and flexible steel with an exclusive non-scratch satin finish for lasting elegance and practicality.

Decor And Microdecor Steel: Designed to protect from scratches, abrasion and corrosive agents, Franke patented Decor and Microdecor finishes create a stunning aluminum effect, enhancing shapes and emphasizing the elegance of each design.



Rules for keeping steel in perfect condition:

Stainless steel is easy to clean and extremely hygienic. In fact, its smooth, non-porous surface makes it difficult for bacteria and micro-organisms to survive. The best way of caring for steel, to keep it bright and shiny and prevent scratches or unsightly marks, is to follow these few simple rules:

- The first time you use it, take extra care when treating and rinsing the surface, to avoid contact with aggressive detergents and prevent ferrous substances in the pipes from being deposited
- Always use cleaning products specifically formulated for stainless steel and do not use detergents containing chlorine, bleach, hydrochloric acid or limescale removal agents
- When cleaning, use soft cloths and not abrasive sponges or metal scourers
- Always rinse thoroughly
- Never leave wet sponges or utensils containing iron on the surface for long periods of time
- Only store containers of detergent or acidic chemical products under the sink once they have been closed



CENTINOX - CEX 210/610-50

Accessories included

1



Strainer Bowl

112.0172.453

2



New Rollmat CEX

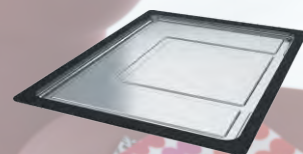
112.0173.411

3



112.0173.062

4



112.0173.587

5



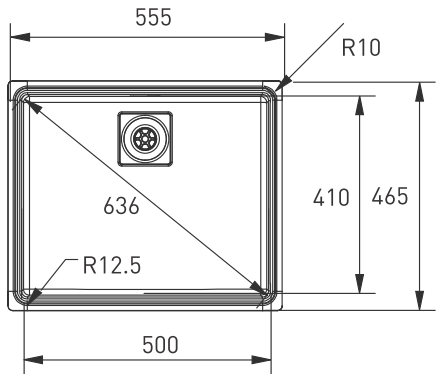
Strainer Bowl

112.0172.453



CENTINOX - Black Satin Finish

CEX 210^{DP}/610-50

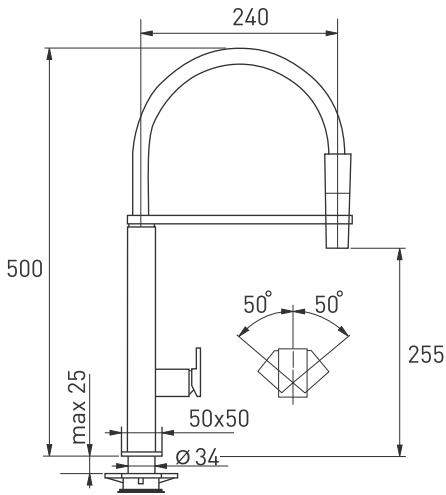


Fun:	Dimension: (LxM)mm	Bowl Size: (LxWxD)mm	MRP: Rs.
127.0179.077	555x465	500x410x200	97,490/-

- State-of-the-art Centenary design
- Formed from the highest grade Stainless Steel 304 18/ 1 0
- Complete with three tiered accessories
- Created to fit perfectly in functionality and design
- Supplied with Basket Strainer Waste
- Won the Red Dot award for the best product design



CEX 210



Fun:	MRP: Rs.
115.0174.709	38,990/-

This is the new Franke Centinox tap with pull-out spray. The effect is achieved by a black rubber spray hose held in place by a false spout, which forms an eye-catching c-spout design with a modern twist.

- Key Features
- Rubber spray hose in the shape of a c-spout
 - Square cubic design
 - Formed from the highest grade Stainless Steel 304 18/10
 - 360° rotatable
 - KEROX Cartridge

*Luxury collection series

SINOS - European Satin Finish

Accessories included

1



Chrome Finish

133.0256.086

Stainless Steel Finish

133.0256.088

2



Lock-in Bowl

112.0081.492

3



Strainer Bowl

112.0081.491

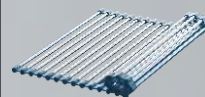
4



New Chopping Board

112.0255.966

5



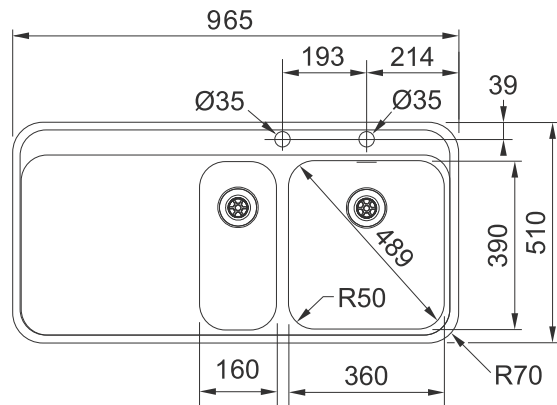
Rolling Mat

112.0256.867



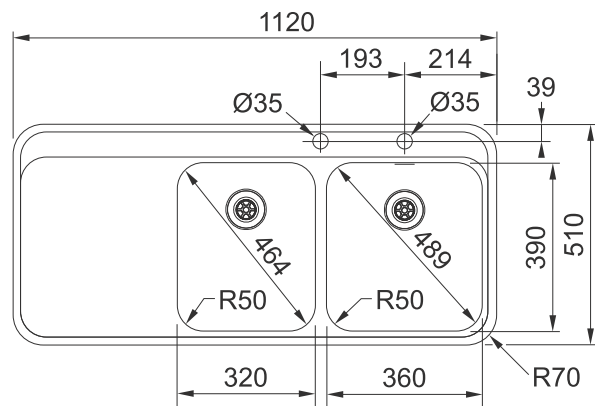
SINOS - European Satin Finish

SNX 251 LHD



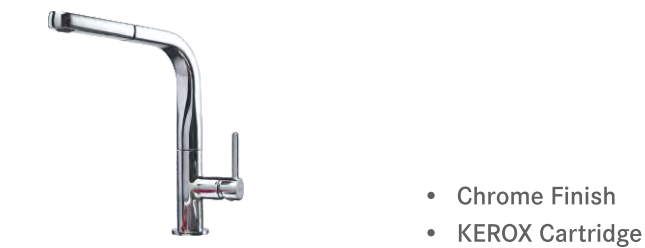
Fun:	Dimension: (LxM)mm	Bowl Size: (LxWxD)mm	MRP: Rs.
127.0275.576	965x510	60x390x120 & 360x390x120	85,000/-

SNX 221 LHD

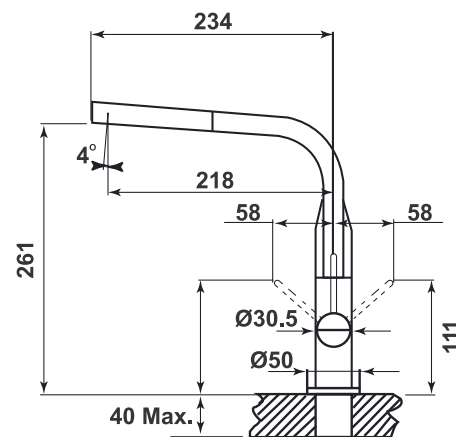


Fun:	Dimension: (LxM)mm	Bowl Size: (LxWxD)mm	MRP: Rs.
127.0279.747	1120x510	320x390x175 & 360x390x175	100,000/-

SINOS TAP



Fun:	MRP: Rs.
115.0260.562	40,000/-



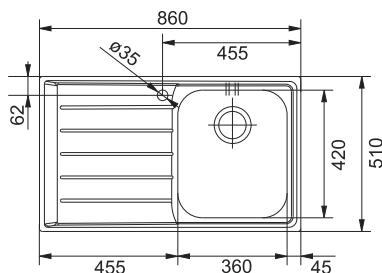
- Patented design as per EcoDesign guidelines which stand for sustainability in development
- Shiny drainer designed for water to drain effortlessly in the bowl
- Round shape to suit all styles of kitchen from Classic to Designer

NEPTUNE - Microdecor Finish



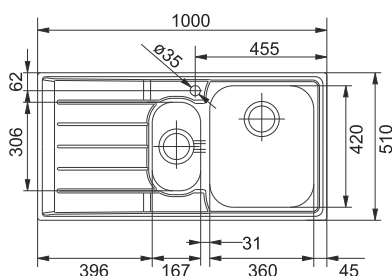
NEPTUNE - Microdecor Finish

NET 611



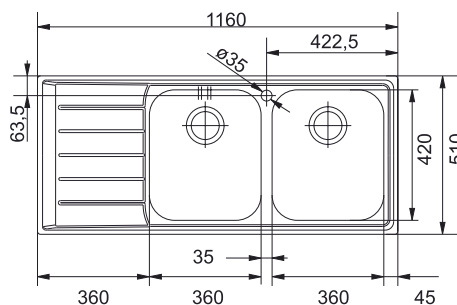
Fun:	Dimension: (LxM)mm	Bowl Size: (LxWxD)mm	MRP: Rs.
RHD:101.0262.014	860x510	360x420x200	21,800/-
LHD:101.0262.013	860x510	360x420x200	21,800/-

NET 651



Fun:	Dimension: (LxM)mm	Bowl Size: (LxWxD)mm	MRP: Rs.
RHD:101.0253.263	1000x510	360x420x200/167x306x152	28,200/-
LHD:101.0253.836	1000x510	360x420x200/167x306x152	28,200/-

NET 621



Fun:	Dimension: (LxM)mm	Bowl Size: (LxWxD)mm	MRP: Rs.
RHD:101.0253.262	1160x510	2*360x420x200	31,200/-
LHD:101.0261.835	1160x510	2*360x420x200	31,200/-

BOX - European Satin Finish

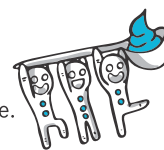


reddot award
winner

BOX - European Satin Finish

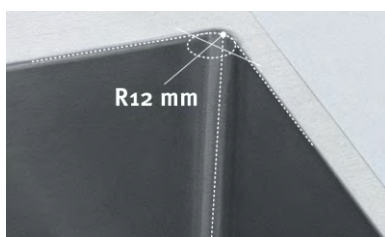
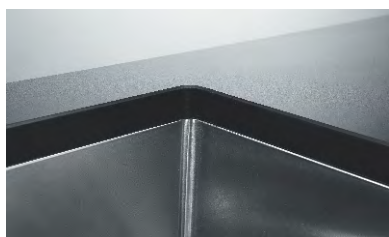
INSTALL PERFECTION IN A MOMENT

A Red Dot award-winner for best-in-class design, the Box range of sinks helps you get the job done simply and with style.



- Easy to install as a built-in sink, slimtop or undermount
- Premium quality stainless steel. High stain and corrosion resistance

Features:



R12 mm Radius, Free from sludge deposition.



Seamless Rim with Elegant match to counter top.



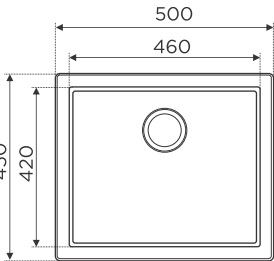
Suited for Under Mount also



BOX - European Satin Finish

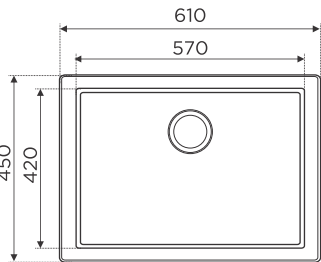


BZX 210/110-46 3 1/2"



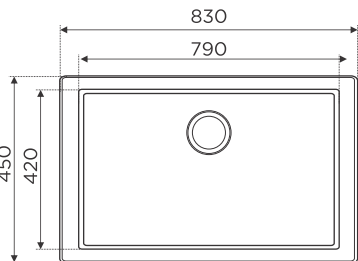
Fun:	Dimension: (LxM)mm (inch)	Bowl Size: (LxWxD)mm	MRP: Rs.
127.0516.111	500 x 450	460 x 420 x 210	10,290/-

BZX 210/110-57 3 1/2"



Fun:	Dimension: (LxM)mm (inch)	Bowl Size: (LxWxD)mm	MRP: Rs.
127.0516.112	610 x 450	570 x 420 x 210	11,990/-

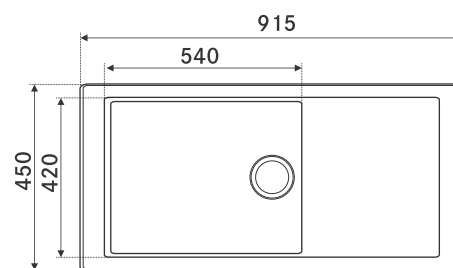
BZX 210/110-79 3 1/2"



Fun:	Dimension: (LxM)mm (inch)	Bowl Size: (LxWxD)mm	MRP: Rs.
127.0516.115	830x 450	790 x 420 x 210	12,990/-

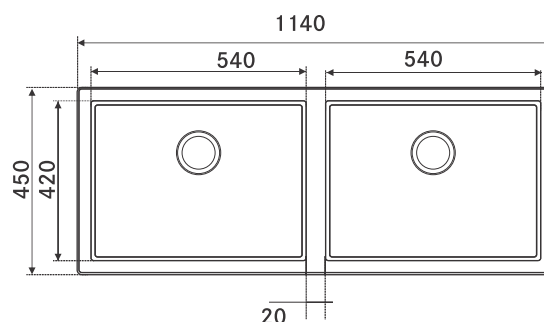
BOX - European Satin Finish

BZX 211/111-54 3 1/2"



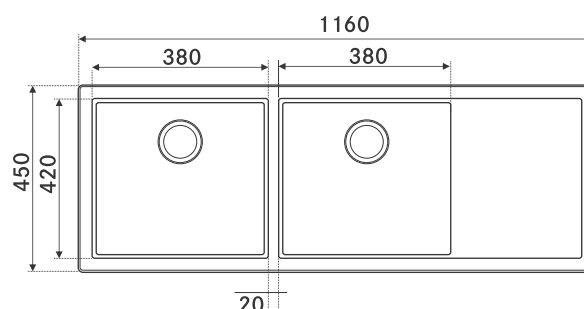
Fun:	Dimension: (LxM)mm (inch)	Bowl Size: (LxWxD)mm	MRP: Rs.
127.0516.116	915 x 450	540 x 420 x 210	15,990/-

BZX 220/120 54-54 3 1/2"



Fun:	Dimension: (LxM)mm (inch)	Bowl Size: (LxWxD)mm	MRP: Rs.
127.0516.117	1140 x 450	2*540 x 420 x 210	19,490/-

BZX 221/121 38-38 3 1/2"



Fun:	Dimension: (LxM)mm (inch)	Bowl Size: (LxWxD)mm	MRP: Rs.
127.0516.118 LHD	1160 x 450	2*380 x 420 x 210	20,990/-
127.0516.119 RHD	1160 x 450	2*380 x 420 x 210	20,990/-

* Designer collection series

BELL - European Satin Finish



Accessories

Optional Accessories Package:

112.0498.609 - 1, MRP: Rs. 4,500/-

112.0498.610 - 2, MRP: Rs. 4,650/-



Chopping Board



Plastic Colander

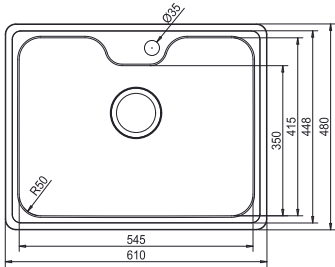


Wire Basket



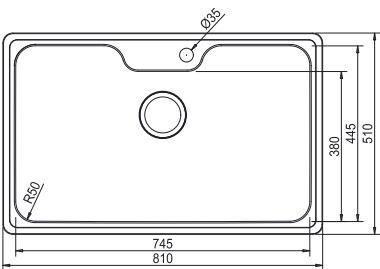
BELL - European Satin Finish

BCX 610-61 (Optional Accessories 1)



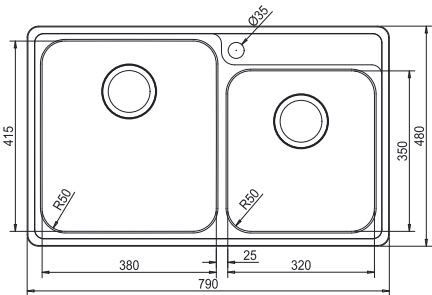
Fun:	Dimension: (LxM)mm	Bowl Size: (LxWxD)mm	MRP: Rs.
101.00489.050	610x480	545x448x200	13,490/-

BCX 610-81 (Optional Accessories 2)



Fun:	Dimension: (LxM)mm	Bowl Size: (LxWxD)mm	MRP: Rs.
101.00489.191	810x510	745x445x200	15,490/-

BCX 620-38/32 (Optional Accessories 1)



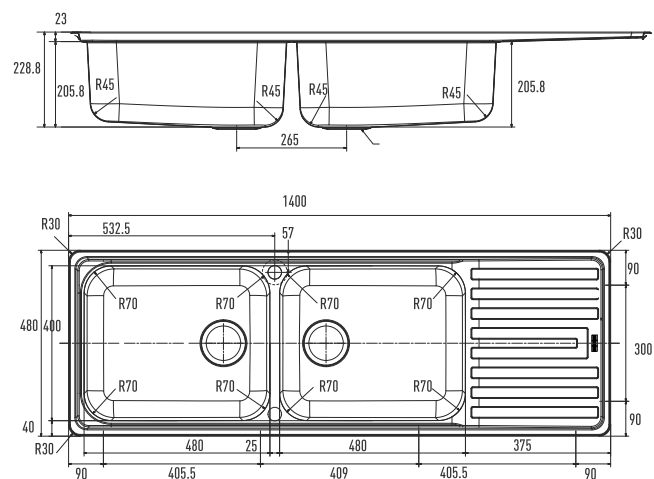
Fun:	Dimension: (LxM)mm	Bowl Size: (LxWxD)mm	MRP: Rs.
101.00489.192	790x480	380x415x180 & 320x350x160	17,490/-

Artisan - European Satin Finish



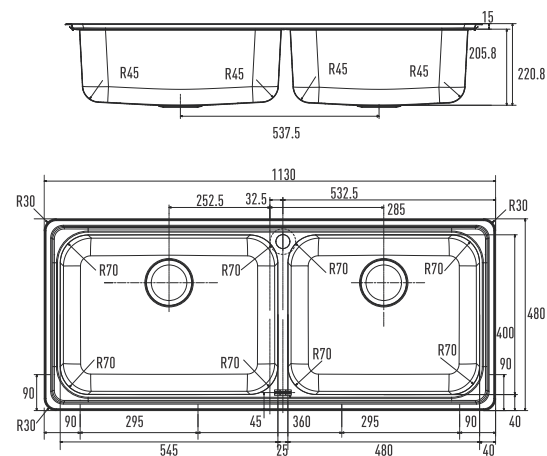
Artisan - European Satin Finish

RSX 621 3 1/2" WWK REV NOF NTH FRL



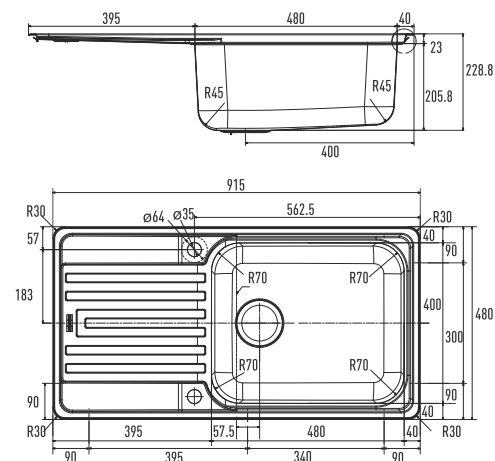
Fun:	Dimension: (LxM)mm	Bowl Size: (LxWxD)mm	MRP: Rs.
101.0539.496	1400 x 480	2x (480 x 400 x 228.8)	18,590/-

RSX 620-55-48 3 1/2" WWK ND NOF NTH FRL



Fun:	Dimension: (LxM)mm	Bowl Size: (LxWxD)mm	MRP: Rs.
101.0536.744	1130 x 480	545 x 480 x 220.8 & 480 x 480 x 220.8	17,990/-

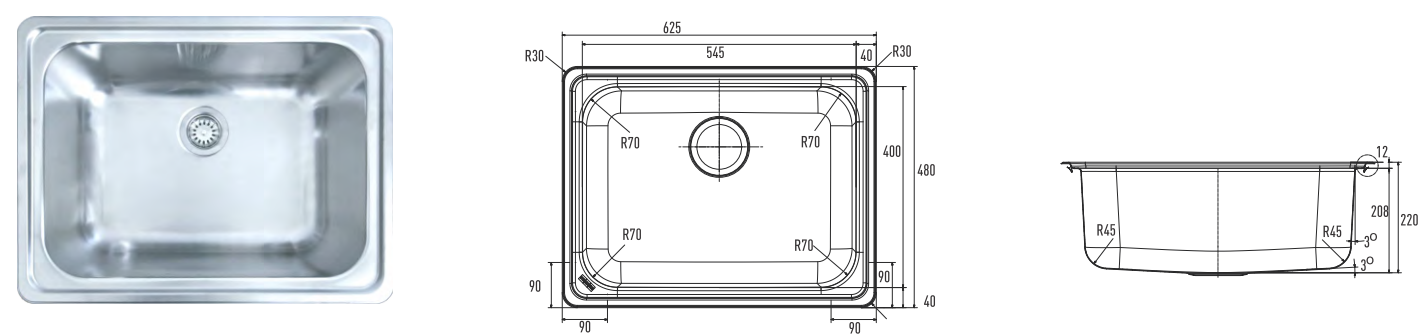
RSX 611-91 3 1/2" WWK REV NOF NTH FRL



Fun:	Dimension: (LxM)mm	Bowl Size: (LxWxD)mm	MRP: Rs.
101.0539.493	915x 480	480 x 480 x 228.8	8,490/-

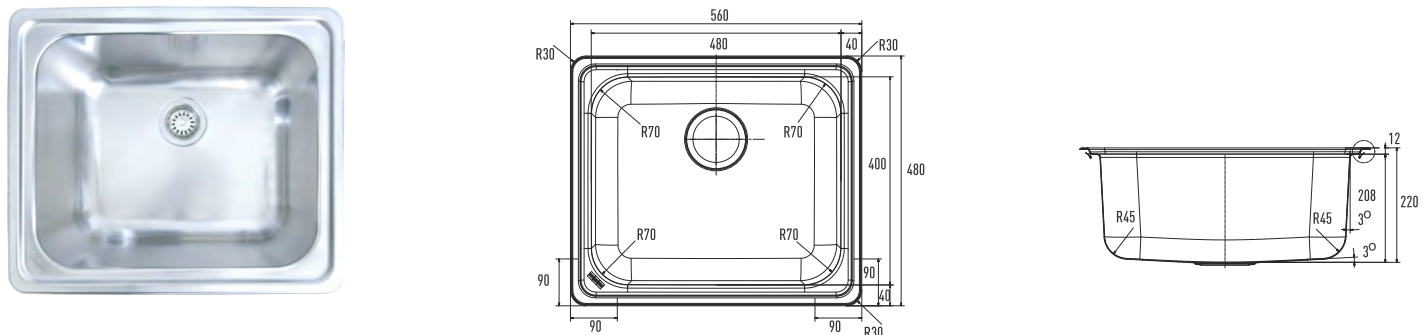
Artisan - European Satin Finish

RSX 610-63 3 1/2" WWK ND NOF NTH FRL



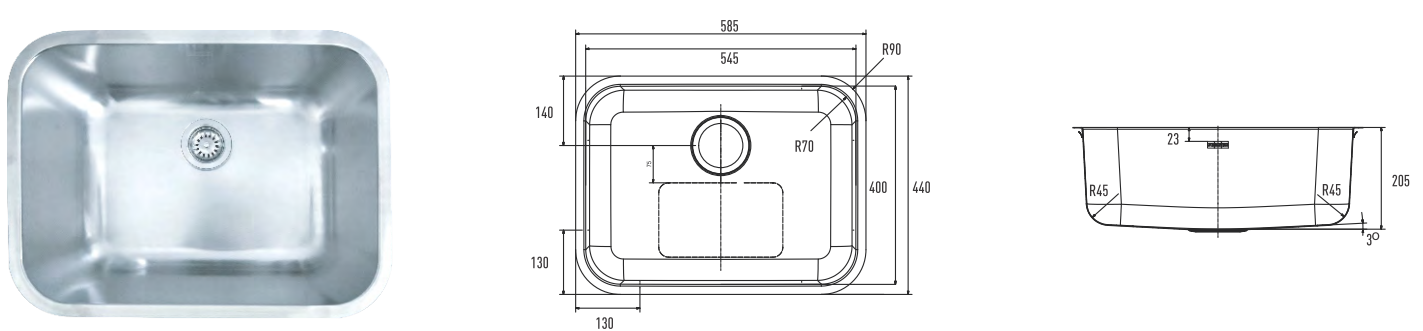
Fun:	Dimension: (LxM)mm	Bowl Size: (LxWxD)mm	MRP: Rs.
101.0539.491	625 x 480	545 x 400 x 220	6,790/-

RSX 610-56 3 1/2" WWK ND NOF NTH FRL



Fun:	Dimension: (LxM)mm	Bowl Size: (LxWxD)mm	MRP: Rs.
101.0539.492	560 x 480	480x 400 x 200	5,890/-

RSX 210-55 3 1/2" WWK ND NOF NTH FRL

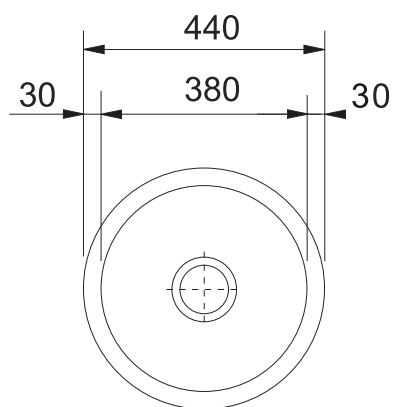


Fun:	Dimension: (LxM)mm	Bowl Size: (LxWxD)mm	MRP: Rs.
127.0544.091	585x 440	545 x 400 x 205	6,090/-

LUGANO - European Satin Finish



LUX 610



Fun:	Diameter: (Ø)mm	Bowl Size: (ØxDepth)mm	MRP: Rs.
101.0253.181	440	380x190	6,990/-

FRAGRANITE SINK





FRAGRANITE

Following extensive testing and development, new Fraganite tackles the humble cleaning problem associated with composite sinks. The revolutionary new Fraganite+ technology is now available on all Franke Fraganite and Silk Sheen Fraganite sinks, which now enjoy ultra-smooth surfaces that are exceptionally easy to keep clean.

Kitchens can be a fertile breeding ground for bacteria, mold and mildew, which can lead to material damage and cause unpleasant odors and stains. On unprotected material, bacteria levels can increase every 20 minutes. The integrated Sanitized® protective function in Fraganite sinks helps to keep this area clean and provides the sink with lasting protection. It does not replace normal cleaning practices, but helps to keep surfaces clean. Fraganite treated with Sanitized® reduces bacterial odors by 99%. Sanitized® protective function helps to keep sink surfaces clean by reducing the growth of bacterial odors, mold and mildew even between cleaning.

The granite particles bonded together during manufacture are now smaller, creating a smoother, flatter surface, reducing the chances for lime scale to build up. It is also far more difficult for residue, food particles and bacteria to accumulate in between the granules, which greatly improves hygiene.

Tested against leading competitors, DuraKleen® Plus comes up trumps on stain resistance. Even after being left to sit on the sink for 18 hours, the toughest stains like beetroot, permanent marker, red wine and iodine can simply be wiped clean away.





SANITIZED®

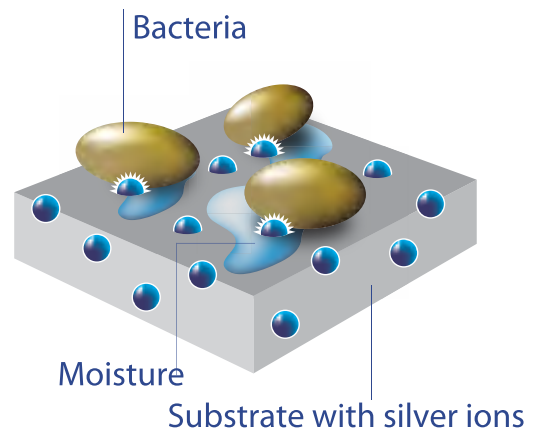


With all the foodstuff around in both raw and cooked states and at various stages of the process of cooking, kitchens are an obvious breeding ground for bacteria. Therefore, as an area that's critical to keep clean and bacteria-free, they need special attention to be paid to them.

On unprotected material, bacteria can multiply every 20 minutes and have a seriously adverse effect on hygiene. The possibility of transferring bacteria is also higher on untreated material. Which is why we have designed our Fraganite sinks with an integrated Sanitized® hygiene function. This helps to keep the area clean and provides the sink with lasting protection. It does not replace normal cleaning but helps to keep surfaces free from bacteria. Tests have proven that Fraganite treated with Sanitized® reduces bacteria and microbe growth by as much as 99%.

Sanitized® also helps to keep the sink surface hygienic and protected from bacteria and microbe growth after and in between normal cleaning cycles. So, all in all, you have an almost-bacteria-free washing-up area.

The silver ion locates the bacteria via the moisture and deactivates it.





FRAGRANITE



Staining agent	Ease of cleaning
Coffee	Cold water
Red wine	Cold water
Olive oil	Cold water
Oven cleaner	Cold water
Ketchup	Cold water
Coca-Cola	Cold water
Silver shine	Cold water
Vinegar	Cold water
Bleach	Cold water
Shoe polish	Cif + hot water
Beetroot	Cold water
Saffron	Cold water
Marker	Cif + hot water + 1 min
Mustard	Cif + cold water
Iodine	Cif + hot water + 30sec

MATERIAL CHART

Fragranite / SilkSheen

Category	Count
Heat	8
Scratch	9
Impact	8
Stain	8
Repair	4
Hygiene	9
Guarantee	10
Total	56

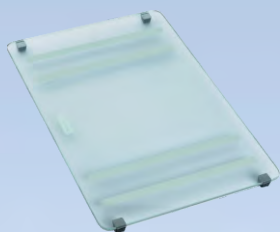
This chart has been developed by Franke to assist in grading the various materials in terms of their performance characteristics for each category.

It is intended to act as a guide for different requirements: 10 points - the best material tested in this performance category. For example, in our tests Fraganite/SilkSheen scores highly in scratch resistance and hygiene.

MYTHOS FUSION - Fraganite Sanitized Coating Finish

Accessories

1



112.0046.415 (Included)

2



112.0017.788 (Included)

3

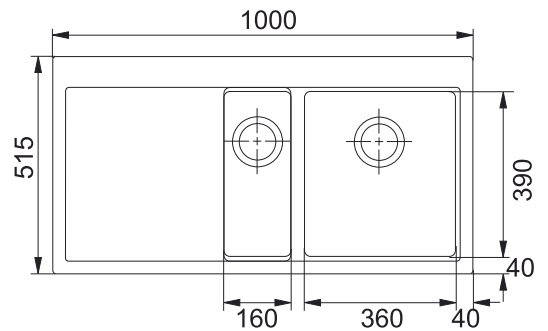


112.0030.882



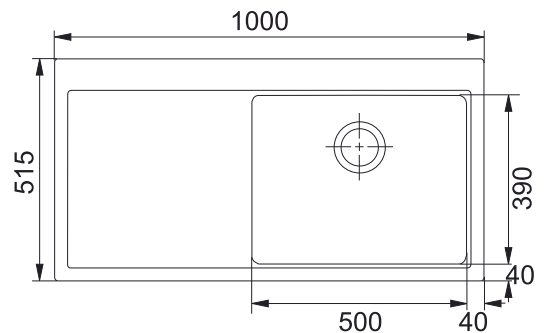
MYTHOS FUSION - FrAGRanite Sanitized Coating Finish

MTF 651-100 x 515 RHD



Fun:	Dimension: (LxM)mm	Bowl Size: (LxWxD)mm	MRP: Rs.
114.0156.992	1000x515	360x390x214 & 160x390x153	54,990/-

MTF 611 LHD



Fun:	Dimension: (LxM)mm	Bowl Size: (LxWxD)mm	MRP: Rs.
114.0157.264	1000x515	500x390x214	53,790/-

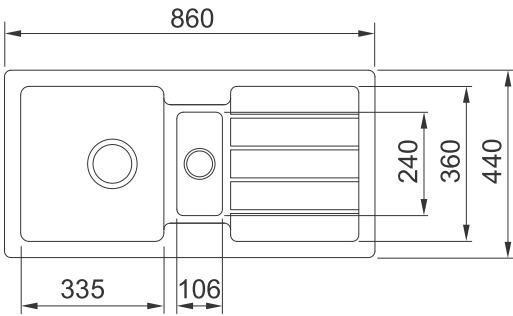


- The most sought after shape and design, now featuring Stainless Steel 304 18/ 10 ribs which are completely flat and fused into the sink drainer.
- Includes slide and glide glass food preparation platter.
- Stainless Steel 304 18/ 10 strainer bowl.

BALI - Fraganite Finish

Description: BLG 651-86 3 1/2" NWK REV NOF GP

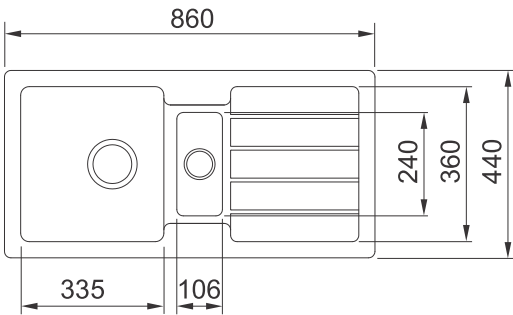
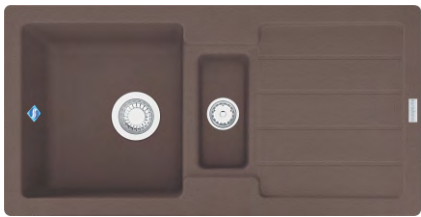
Finish: Graphite



Fun:	Dimension: (LxM)mm	Bowl Size: (LxWxD)mm	MRP: Rs.
114.0483.682	860x440	335x360x170/106x240x80	16,990/-

Description: BLG 651-86 3 1/2" NWK REV NOF DB

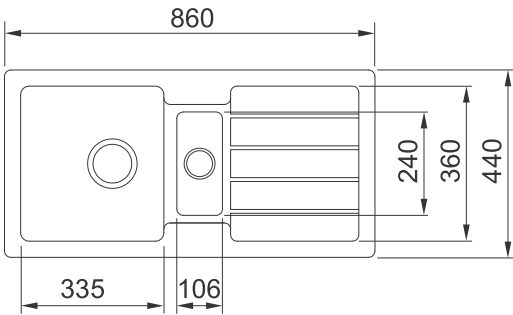
Finish: Dark Brown



Fun:	Dimension: (LxM)mm	Bowl Size: (LxWxD)mm	MRP: Rs.
114.0483.681	860x440	335x360x170/106x240x80	16,990/-

Description: BLG 651-86 3 1/2" NWK REV NOF OA

Finish: Oat Meal

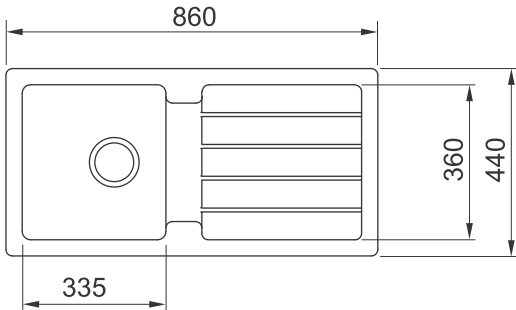
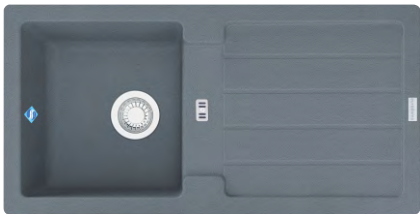


Fun:	Dimension: (LxM)mm	Bowl Size: (LxWxD)mm	MRP: Rs.
114.0483.660	860x440	335x360x170/106x240x80	16,990/-

BALI - Fraganite Finish

Description: BLG 614 3 1/2" NWK REV MGraphite

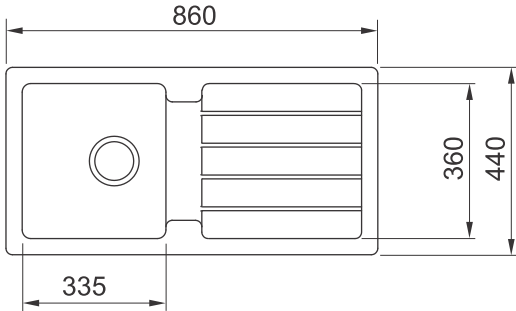
Finish: Graphite



Fun:	Dimension: (LxM)mm	Bowl Size: (LxWxD)mm	MRP: Rs.
114.0483.656	860x440	335x360x170	13,490/-

Description: BLG 614 3 1/2" NWK REV MDark brown

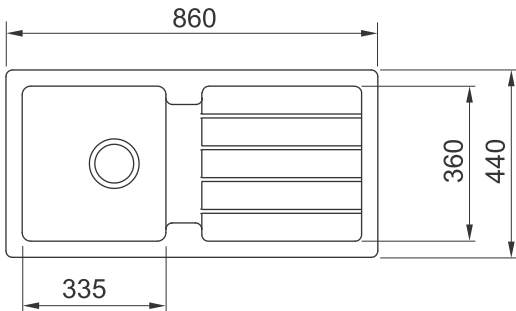
Finish: Dark Brown



Fun:	Dimension: (LxM)mm	Bowl Size: (LxWxD)mm	MRP: Rs.
114.0483.653	860x440	335x360x170	13,490/-

Description: BLG 614 3 1/2" NWK REV GOatmeal

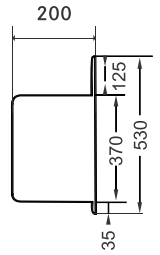
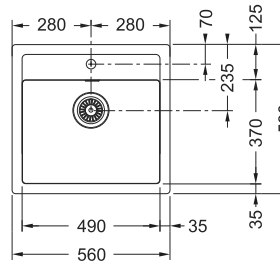
Finish: Oat Meal



Fun:	Dimension: (LxM)mm	Bowl Size: (LxWxD)mm	MRP: Rs.
114.0483.657	860x440	335x360x170	13,490/-

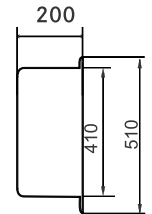
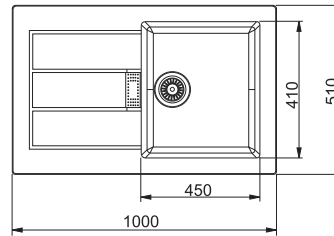


Tectonite 610



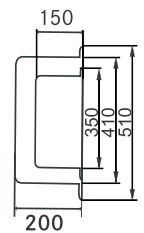
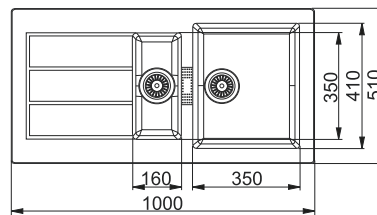
Fun:	Dimension: (LxM)mm	Bowl Size: (LxWxD)mm	MRP: Rs.
CB:114.0279.873	560x530	490x370x200	9,990/-

Tectonite 611



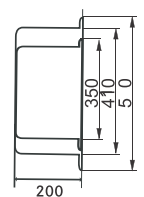
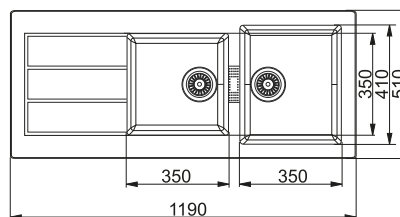
Fun:	Dimension: (LxM)mm	Bowl Size: (LxWxD)mm	MRP: Rs.
CB:114.0253.151	1000x51	450x410x	16,400/-

Tectonite 651



Fun:	Dimension: (LxM)mm	Bowl Size: (LxWxD)mm	MRP: Rs.
CB:114.0253.160	1000x510	350x410x200 & 160x350x150	18,400/-

Tectonite 621



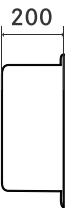
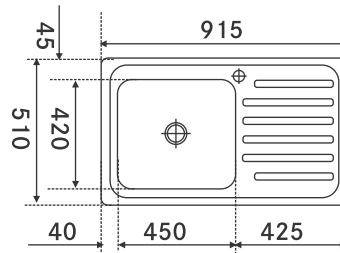
Fun:	Dimension: (LxM)mm	Bowl Size: (LxWxD)mm	MRP: Rs.
CB:114.0253.281	1190x510	350x410x200 & 350x350x150	21,800/-

ADRIAN - Microdecor/European Satin Finish



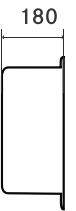
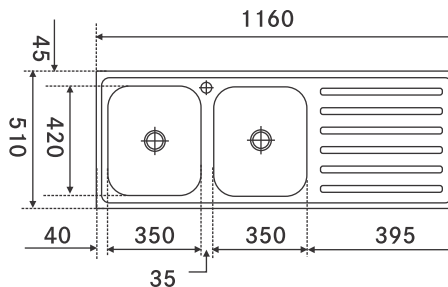
ADRIAN - Microdecor / European Satin Finish

ADRIAN 611 Omni (Microdecor Finish)



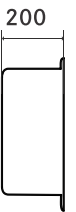
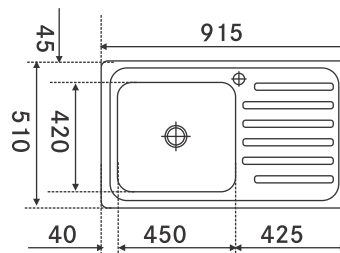
Fun:	Dimension: (LxM)mm	Bowl Size: (LxWxD)mm	MRP: Rs.
101.0250.149	915x510	450x420x200	13,200/-

ADRIAN 621 Trendy (Microdecor Finish)



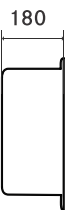
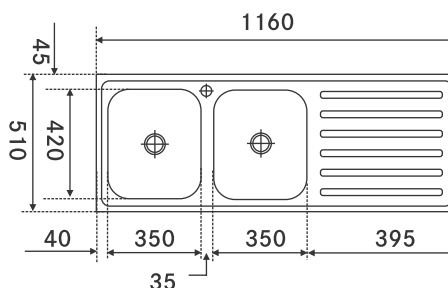
Fun:	Dimension: (LxM)mm	Bowl Size: (LxWxD)mm	MRP: Rs.
101.0250.781	1160x510	2*350x420x180	21,000/-

ADRIAN 611 Omni (European Satin Finish)



Fun:	Dimension: (LxM)mm	Bowl Size: (LxWxD)mm	MRP: Rs.
101.0250.689	915x510	450x420x200	9,600/-

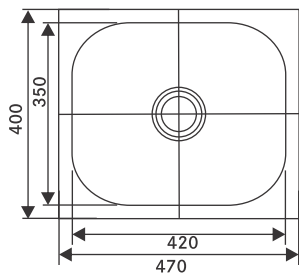
ADRIAN 621 Trendy (European Satin Finish)



Fun:	Dimension: (LxM)mm	Bowl Size: (LxWxD)mm	MRP: Rs.
101.0250.710	1160x510	2*350x420x180	16,300/-

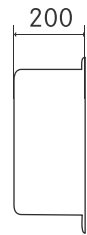
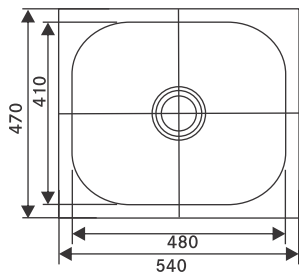
610 SERIES - European Satin Finish

610 X Trendy (19 x 16)



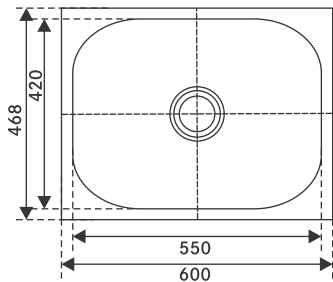
Fun:	Dimension: (LxM)mm	Bowl Size: (LxWxD)mm	MRP: Rs.
101.0152.868	470x400	420x350x180	4,800/-

610 X Insti (21 x 18)



Fun:	Dimension: (LxM)mm	Bowl Size: (LxWxD)mm	MRP: Rs.
101.0153.081	540x470	480x410x200	5,690/-

610 X Grand (24 x 18)

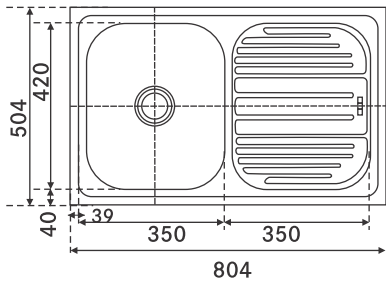


Fun:	Dimension: (LxM)mm	Bowl Size: (LxWxD)mm	MRP: Rs.
101.0153.088	600x468	550x420x220	6,690/-

*Indian premium collection series

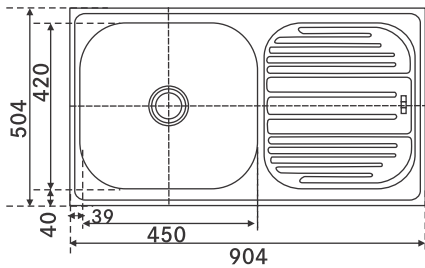
611 SERIES - European Satin Finish

611 X Trendy (32 x 20)



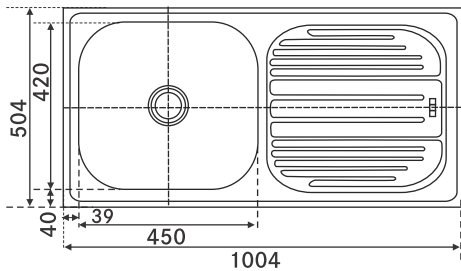
Fun:	Dimension: (LxM)mm	Bowl Size: (LxWxD)mm	MRP: Rs.
101.0153.107	804x504	350x420x180	7,400/-

611 X Omni (36 x 20)



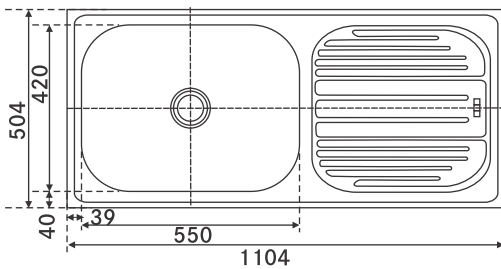
Fun:	Dimension: (LxM)mm	Bowl Size: (LxWxD)mm	MRP: Rs.
101.0153.112	904x504	450x420x180	8,290/-

611 X Omni (40 x 20)



Fun:	Dimension: (LxM)mm	Bowl Size: (LxWxD)mm	MRP: Rs.
101.0153.116	1004x504	450x420x200	9,100/-

611 X Grand (44 x 20)

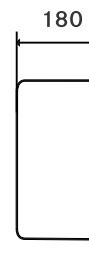
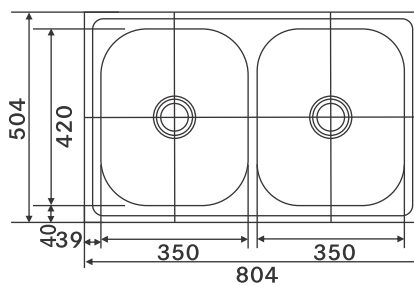


Fun:	Dimension: (LxM)mm	Bowl Size: (LxWxD)mm	MRP: Rs.
101.0153.118	1104x504	550x420x200	10,500/-

*Indian premium collection series

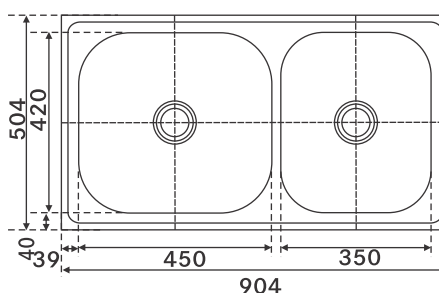
620/651 SERIES - European Satin Finish

620 X Trendy (32 x 20)



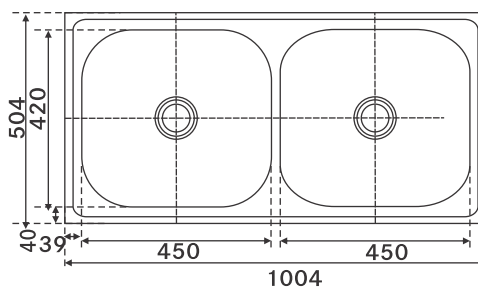
Fun:	Dimension: (LxM)mm	Bowl Size: (LxWxD)mm	MRP: Rs.
101.0153.126	804x504	2*350x420x180	13,400/-

620X Omni (36 x 20)



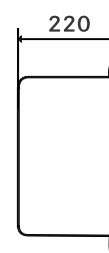
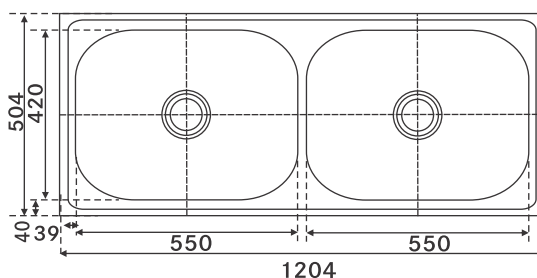
Fun:	Dimension: (LxM)mm	Bowl Size: (LxWxD)mm	MRP: Rs.
101.0153.130	904x504	450x420x200 & 350x420x180	13,850/-

620 X Omni (40 x 20)



Fun:	Dimension: (LxM)mm	Bowl Size: (LxWxD)mm	MRP: Rs.
101.0153.137	1004x504	2*450x420x200	15,800/-

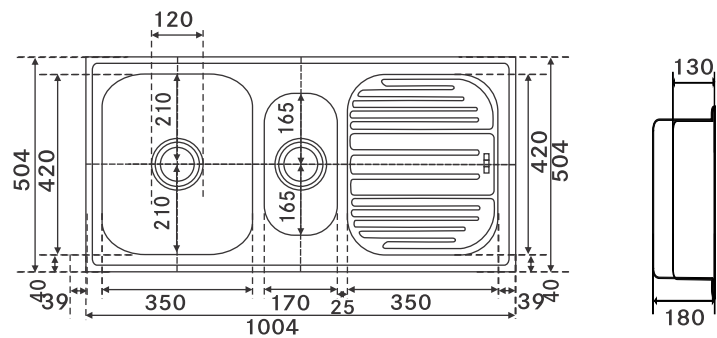
620X Grand (48 x 20)



Fun:	Dimension: (LxM)mm	Bowl Size: (LxWxD)mm	MRP: Rs.
101.0153.141	1204x504	2*550x420x220	19,300/-

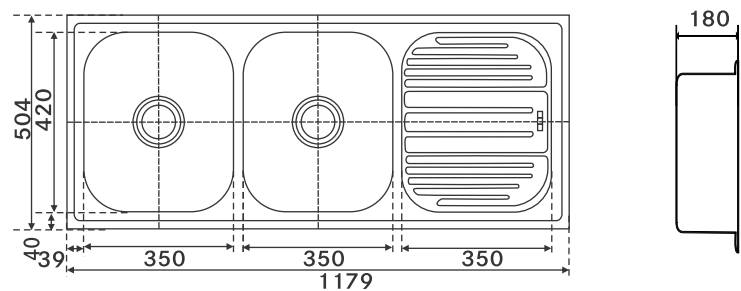
621/651 SERIES - European Satin Finish

651X Trendy (40 x 20)



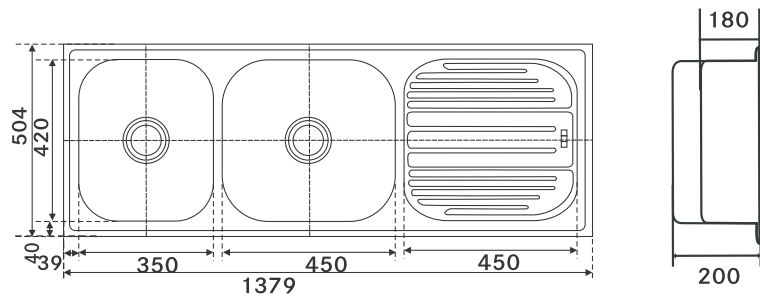
Fun:	Dimension: (LxM)mm	Bowl Size: (LxWxD)mm	MRP: Rs.
101.0153.153	1004x504	350x420x180 / 170x330x130	14,200/-

621X Trendy (47 x 20)



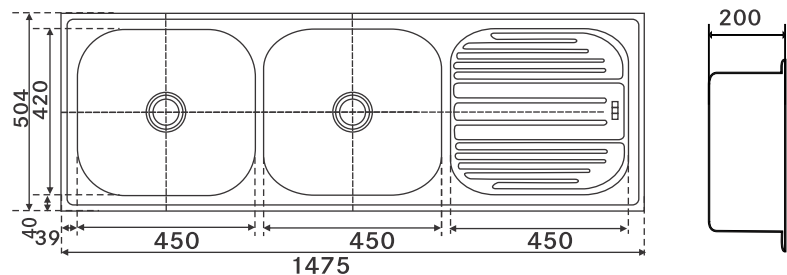
Fun:	Dimension: (LxM)mm	Bowl Size: (LxWxD)mm	MRP: Rs.
101.0153.143	1179x504	350x420x180	15,300/-

621CX Omni (55 x 20)



Fun:	Dimension: (LxM)mm	Bowl Size: (LxWxD)mm	MRP: Rs.
101.0153.145	1379x504	450x420x200 / 350x420x180	17,000/-

621 X Omni (59 x 20)



Fun:	Dimension: (LxM)mm	Bowl Size: (LxWxD)mm	MRP: Rs.
101.0153.151	1479x504	2*450x420x200	18,900/-

*Indian premium collection series

KITCHEN FAUCETS

Body Material

Bronze (59%-63%), low lead content (0.8 % - 1.6 %) low residue (<1.5%) – gravity casting or low pressure casting.
Most products in the market are sand cased with lots of pinholes and uneven body thickness.

Electroplating

The thickness of the nickel plating is more than international and European standards and more corrosion resistant than others.

Surface chrome plating thickness for Nickel and Chrome

Franke	Nickel > 7.5u	Chrome >0.25 u
International Standard	Nickel > 5 u	Chrome > 0.1u
EN 817 / EN 200		

- Cartridge:** German Ceramic Cartridge and Longer Life.
- Flexible hose:** Spanish S/S 304 exible hose, pressure resistant and corrosion resistant.
- Aerator:** Using top grade Aerator, integrating water saving and water flow.
- Fasteners:** All using Stainless Steel.



KITCHEN FAUCETS

CT 103SE



Fun	115.0254.614
MRP	₹ 12,990/-
SS Tap	

CT 133S



Fun	115.0254.613
MRP	₹ 14,990/-
Pull Out SS Tap	

RT 505



Fun	115.0079.067
MRP	₹ 6,850/-

CT 903C



Fun	115.0076.532
MRP	₹ 9,990/-

CT 501C



Fun	115.0255.560
MRP	₹ 7,890/-

RMD 891



Fun:	115.0154.681
MRP:	₹ 8,150/-

▷ PULL OUT TAP

KITCHEN FAUCETS

LLD821



Fun:	115.0154.680
MRP:	₹ 4,350/-

M 507-C8



Fun:	115.0083.496
MRP:	₹ 6,990/-



COLD WATER TAP

CT901S-CWO



FUN No :	115.0426.347
MRP:	₹ 9,990/-

- Specification:**
- Type: Side single lever kitchen faucet
 - Installation: Sink Mount
 - Material: Stainless steel 304 AISI
 - Surface: Inox Swiss Satin
 - Spout length: 215mm
 - Spout height: 275mm
 - Tap height: 335mm

CT902S-CWO



FUN No :	115.0426.372
MRP:	₹ 9,490/-

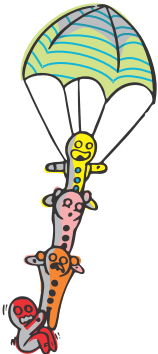
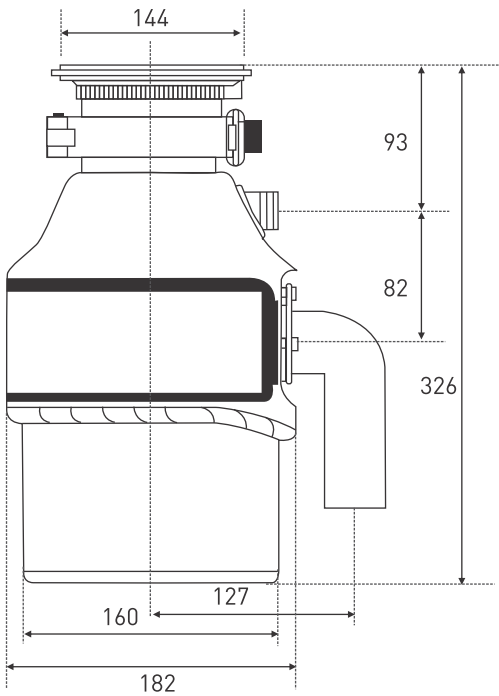
- Specification:**
- Type: Side single lever kitchen faucet
 - Installation: Wall Mount
 - Material: Stainless steel 304 AISI
 - Surface: Inox Swiss Satin
 - Spout length: 215mm
 - Spout height: 240mm
 - Tap height: 300mm

BIO WASTE DISPOSER

Bio Waste Disposer 0.75 H.P.

This is a high output power Bio Waste Disposer with 0.75 HP motor. The lower speed but high output power delivers an ideal combination crunch with low noise. Crunch and Dispose the following down the drain for an easily-maintained and hygienic kitchen: fruit, vegetable peels, rice, soft chicken bones and egg shells.

Bio Waste Disposer



Fun:	MRP:
134.0041.549	₹16,200/-

Features

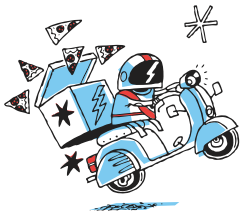
- Fast grinding technology
- Corrosion proof stainless steel
- Manual reset for overload protection
- Handy wall stitch operation
- Easy and convenient installation
- Under cutter disk

Materials

- Sink flange: stainless steel
- Hopper: glass filled nylon
- Swivel impeller: stainless steel
- Turntable: stainless steel

Specification

- Motor speed: 1450 rpm
- Horsepower: 0.75 HP
- Rating Power 560W, 220V-250-V/50-60Hz
- Motor type: AC induction
- Type of feed: continuous
- Sound Shell: Yes
- Overload protection: manual reset
- Container: 1200 ml
- Diameter of standard sink hole: 90 mm
- Individual shipping weight: 6.3 kg



ACCESSORIES

Plumbing Kit Single Bowl - 611



Fun:	MRP: Rs.
112.0156.034	900/-

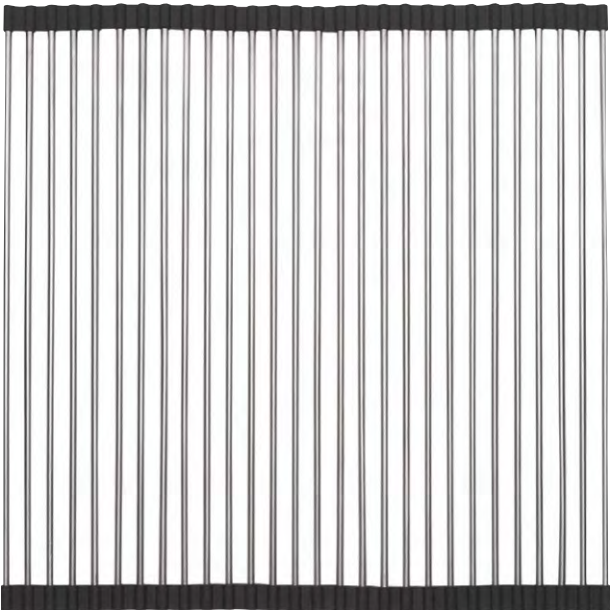
Plumbing Kit Double Bowl - 621



Fun:	MRP: Rs.
112.0156.044	1,360/-



Roller Mat



Fun:	Size	MRP: Rs.
112.0058.824	366x438mm	3,000/-
112.0050.988	400x400mm	3,500/-







Regd. Office:

FRANKE FABER INDIA PVT. LTD.

Gat No.: 1086/1/2, Nagar Road,
Sanaswadi, Tal Shirur, Pune - 412208,
Maharashtra, India.

E-mail: ks-appliances.in@franke.com
website: www.franke.com
CIN-U99999PN1997PLC107240

Manufacturing Plant:

FRANKE FABER INDIA PVT. LTD.

Plot No. L-7, MIDC, Waluj Industrial
Area, Aurangabad-431136,
Maharashtra, India.

E-mail: ks-appliances.in@franke.com
website: www.franke.com
CIN-U99999PN1997PLC107240

Customer Care: All India Toll Free Helpline No.: 1800 209 3484

E-mail: ks-appliances.in@franke.com Follow us on: Facebook/[frankeindia](https://www.facebook.com/frankeindia)



AUTHORISED DEALER



Note: Features and specifications as shown may not be part of standard accessories and are subject to change without prior notice. All dimensions are approximate.